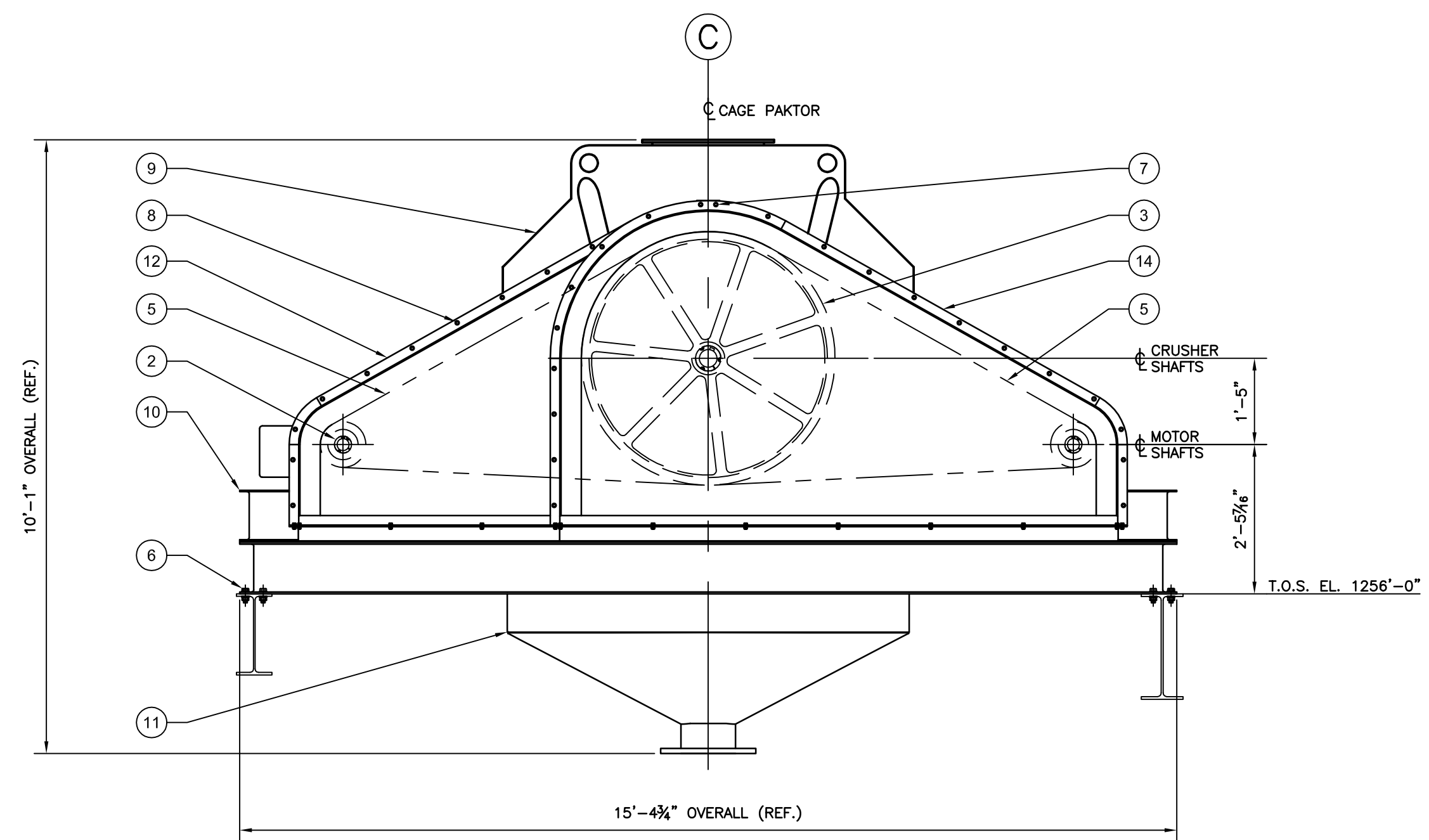
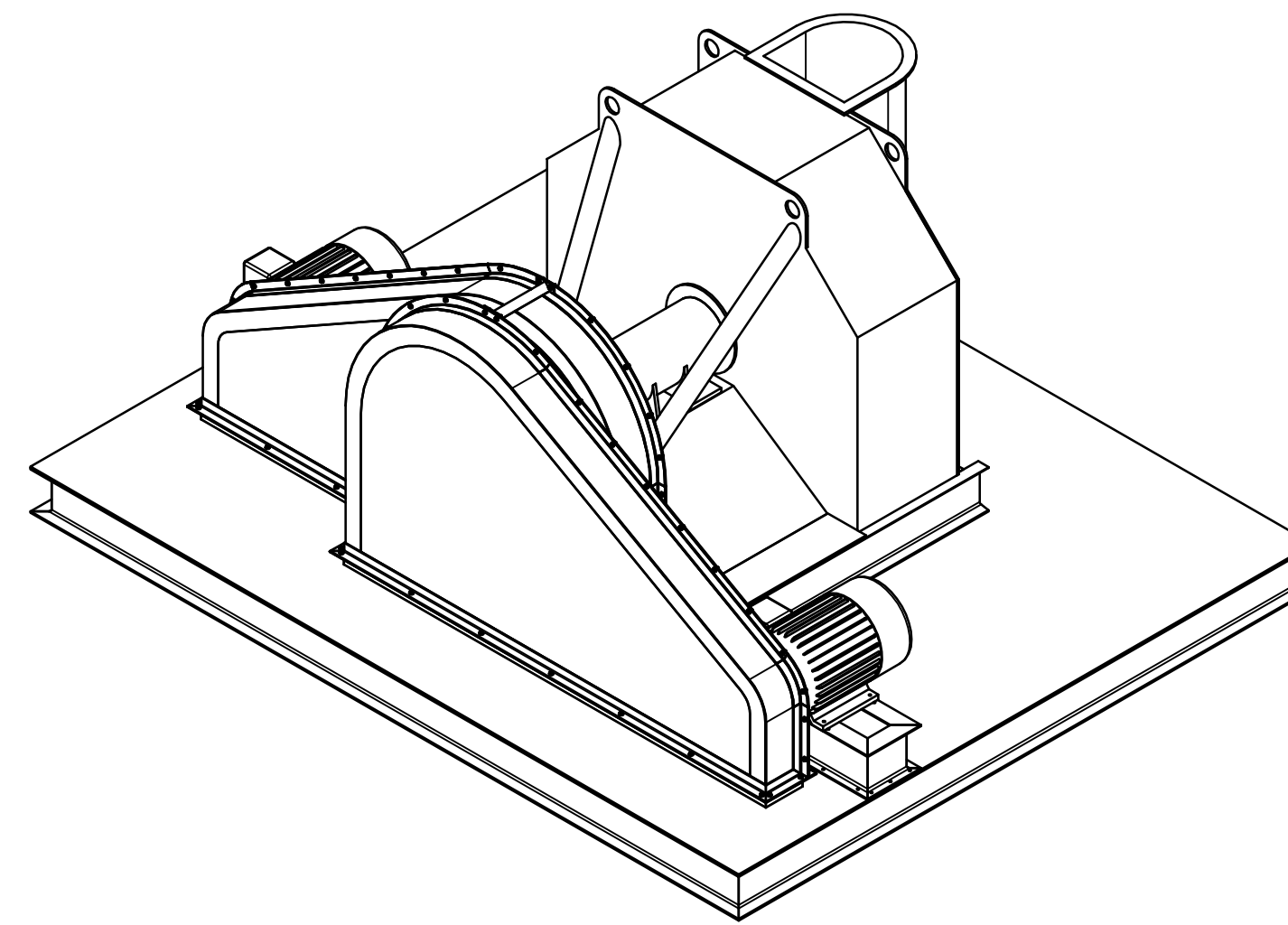
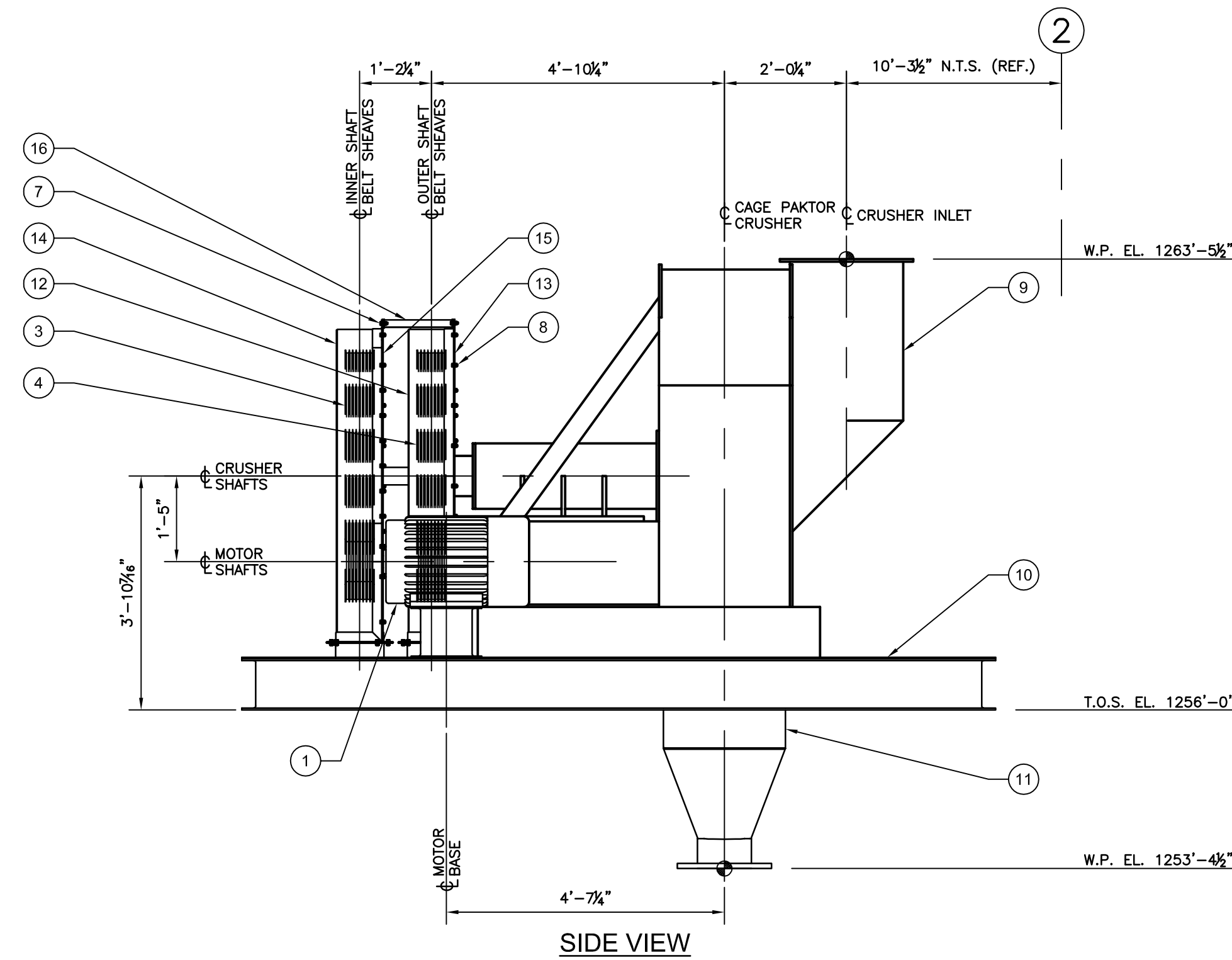


PLAN VIEW



PART No. 500125-001
ELEVATION VIEW
SCALE 1/2"=1'-0"



SIDE VIEW

BILL OF MATERIAL

EQUIPMENT COMPONENTS

MOTOR												
ITEM No.	QTY.	MANUFACTURER	FRAME	TYPE	ENCL.	HORSE POWER	R.P.M.	VOLTS	PHASE	SHAFT SIZE	KEYWAY	TOTAL WEIGHT (lbs.)
1	2	-	364T	-	-	-	-	-	-	-	-	-

SHEAVES AND BUSHINGS										
ITEM No.	QTY.	MANUFACTURER	TYPE	SHEAVE O.D.	SHEAVE PART No.	DESCRIPTION (SIZE - BUSHING)	BUSHING PART No.	BORE	KEYWAY	TOTAL WEIGHT (lbs.)
2	2	DODGE	DRIVER	9.0	-	2517	-	2.375	-	47
3	1	DODGE	DRIVEN	50.0	-	3535	-	3.500	-	270
4	1	DODGE	DRIVEN	50.0	-	3535	-	8.000	-	310

BELTS										
ITEM No.	QTY.	MANUFACTURER	TYPE	BELT No.	PART No.	OUTSIDE LENGTH	CENTER DISTANCE	TOTAL WEIGHT (lbs.)		
5	16	DODGE	-	5V-2240	-	250	74	-		

BOLT SCHEDULE										
ITEM No.	QTY.	MATING ITEM No.s	DESCRIPTION	BOLT GRADE	HEX. NUT	LOCK WASHER	BEVEL WASHER	FLAT WASHER	REMARKS	
6	40	-	3/4"-10 UNC x 2 1/2" LG	8	40	-	-	80	-	
7	4	-	3/8"-16 UNC x 1 1/4" LG	8	4	-	-	8	-	
8	70	-	3/8"-16 UNC x 7/8" LG	8	70	-	-	140	-	

ADDITIONAL COMPONENTS										
ITEM No.	QTY.	Mk#	DESCRIPTION	REMARKS	TOTAL WEIGHT (lbs.)					
9	1	500125-138	CAGE PAKTOR HOUSING	-	-					
10	1	500125-139	CAGE PAKTOR BASE	-	-					
11	1	500125-140	DISCHARGE CHUTE	-	-					
12	1	500125-141A	OUTER SHAFT BELT GUARD CASE	-	-					
13	1	500125-141B	OUTER SHAFT BELT GUARD BACK PLATE	-	-					
14	1	500125-142A	INNER SHAFT BELT GUARD COVER	-	-					
15	1	500125-142B	INNER SHAFT BELT GUARD BACK PLATE	-	-					
16	1	500125-143	BELT GUARD BRACE	-	-					

NOTES & SPECIFICATIONS

- MARK NO. LOCATIONS AS INDICATED BY THE FOLLOWING:
- | | |
|--------------------|---------------------|
| DRAWING INDICATION | MARKING METHOD |
| | ENGRAVE METAL STAMP |
| | WELD |
- ALL TOLERANCES TO BE AS FOLLOWS UNLESS NOTED OTHERWISE:
- | | | | | | |
|------------|------------|------------|----------|-----------|--------|
| 1 DEC. PL. | 2 DEC. PL. | 3 DEC. PL. | FINISHES | FRACTIONS | ANGLES |
| ±0.015" | ±0.010" | ±0.005" | 125 | ±1/64" | ±0.5° |

GENERAL NOTES:

- SHOP ASSEMBLY TO ENSURE FIT.
- ENSURE ALL SHARP EDGES ARE GROUND SMOOTH.
- PAINT AS PER CLIENT SPEC.
- ENSURE ALL PART NUMBERS ARE CLEARLY MARKED ON COMPONENTS.

REVISIONS							
NO.	DESCRIPTION	BY	CHK	DATE	NO.	DESCRIPTION	BY

REVISIONS							
NO.	DESCRIPTION	BY	CHK	DATE	NO.	DESCRIPTION	BY

STAMP			

		PROJECT
DWN. BY: RAD DATE: 24-FEB-2014 DESIGN BY: EDC DATE: 24-FEB-2014 CHK'D. BY: BDT DATE: 28-FEB-2014		TITLE: CRUSHER PART No. 500125-001 GENERAL ASSEMBLY SCALE: 1/2"=1'-0" JOB No. 125-02 DWG. No. 500125-137