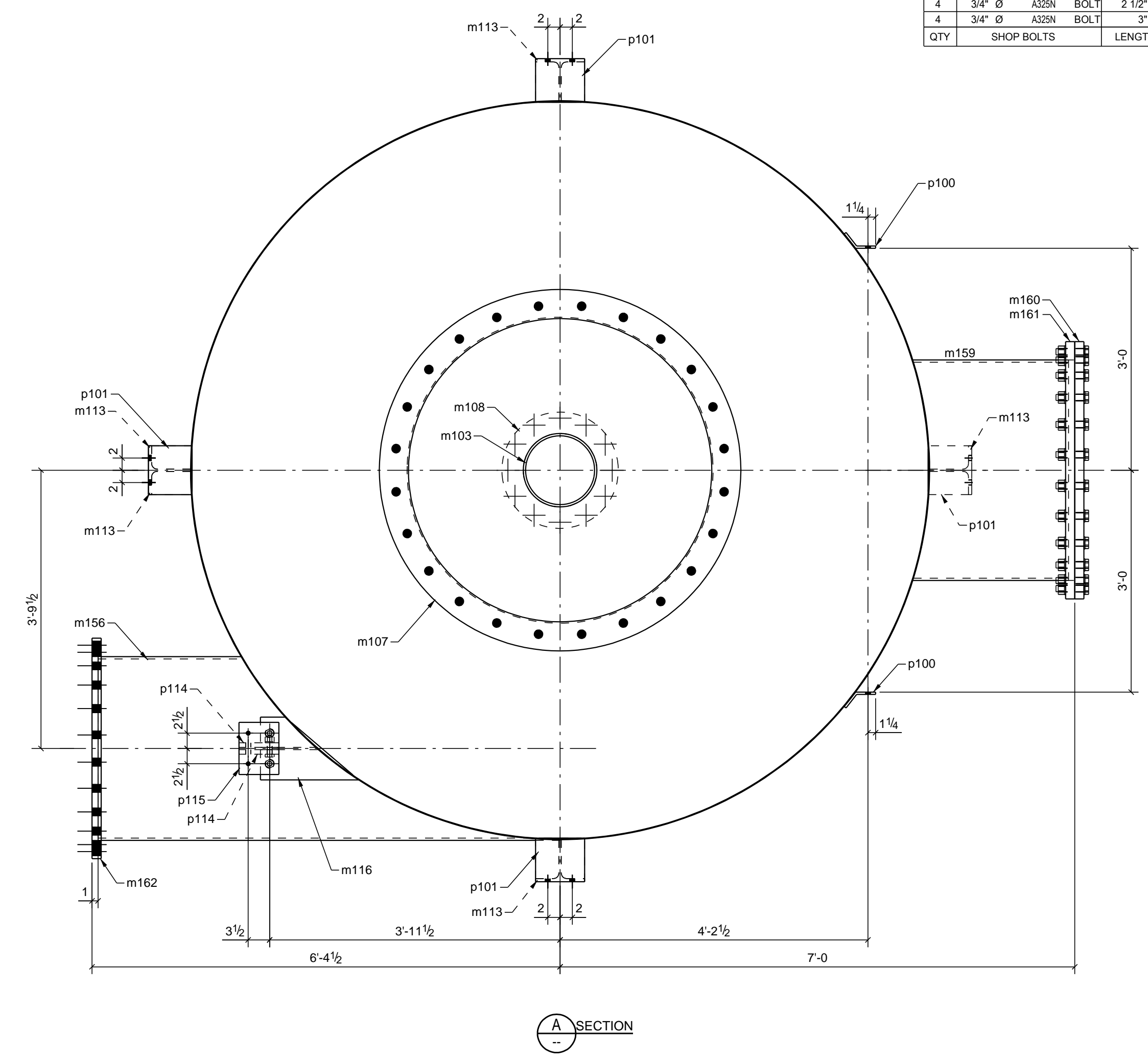
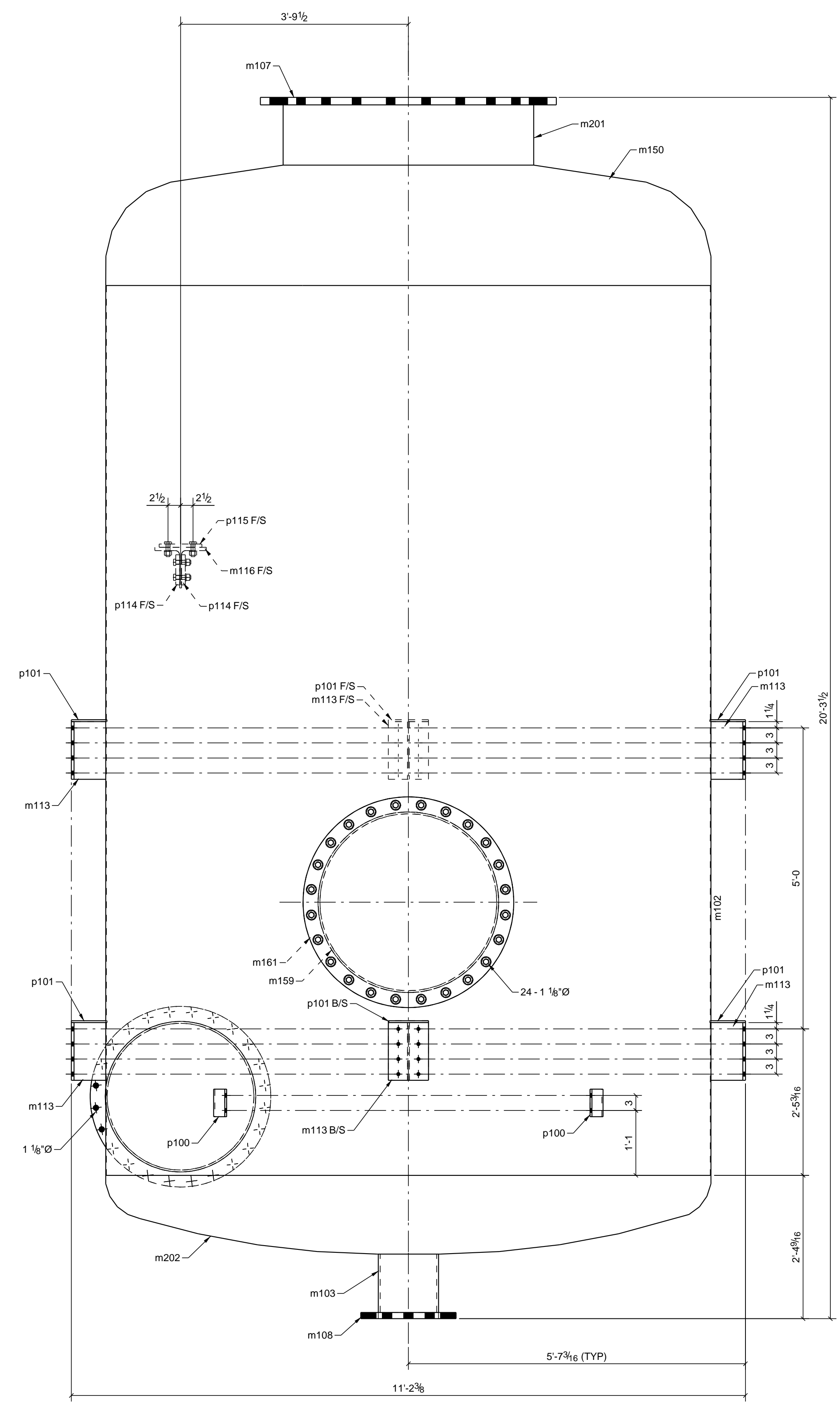
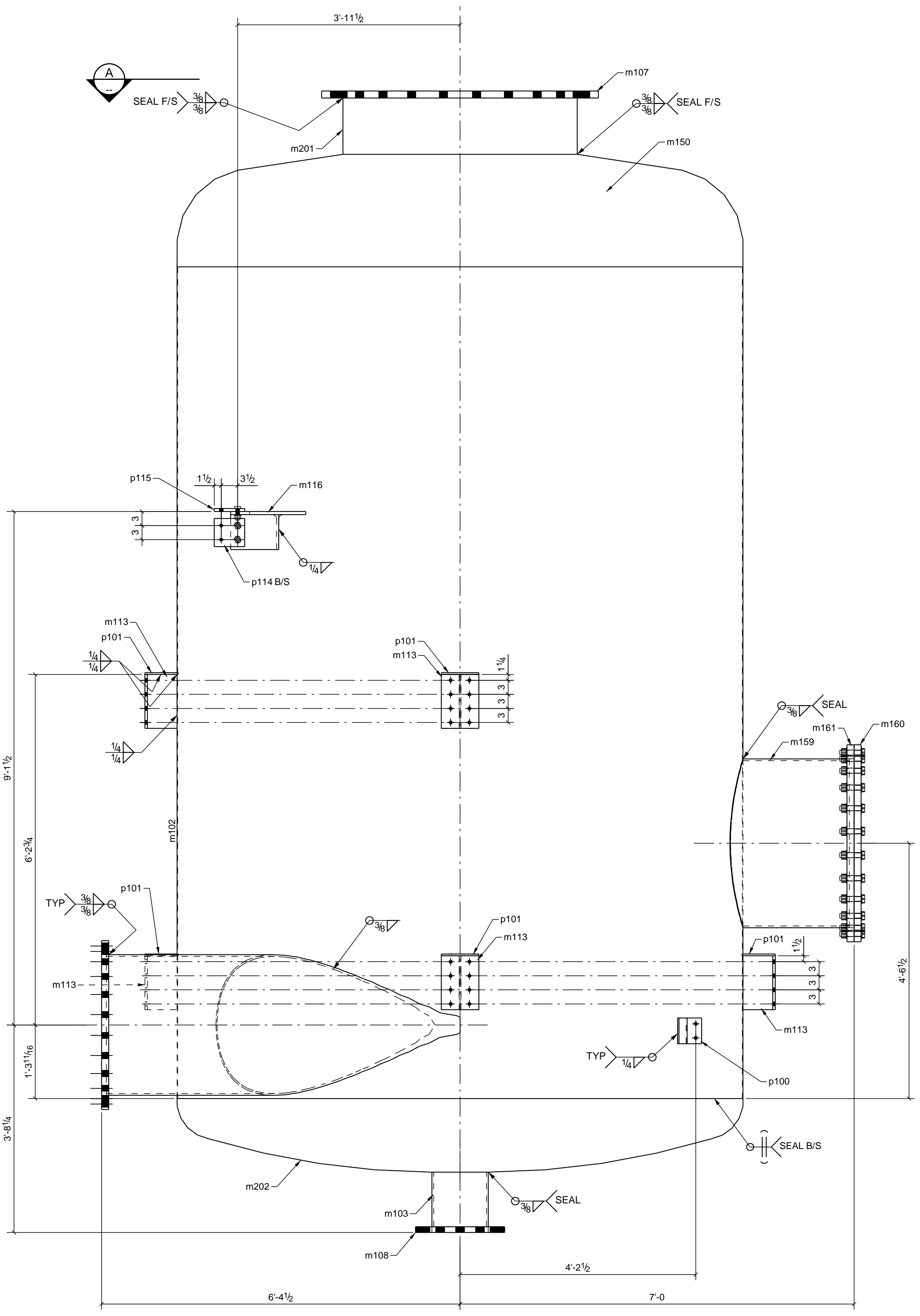


TOTAL QTY	UNIT QTY	MARK	DESCRIPTION	LENGTH	GRADE	REMARKS	WEIGHT:
1	1	A100	TANK				2377.72
1	1	m102	CHS120 5/8"X1/8"	14'-9 5/16"	300W		46.31
1	1	m103	CHS12"X3/8"	1'-0"	A53		344.01
1	1	m107	D59"	0'-1 1/2"	A181		60.17
1	1	m108	D19"	0'-1 1/4"	A181		20.58
7	7	m113	WTX21.5	0'-11 1/2"	350W		44.70
1	1	m116	WTX33.5	1'-4"	350W		399.46
1	1	m156	TUBE30"X3/8"	6'-3 3/8"	350W		285.50
1	1	m159	TUBE36"X3/8"	2'-1 7/16"	350W		588.13
1	1	m160	D42"	0'-1 1/2"	A181		156.18
1	1	m161	D42"	0'-1 1/2"	A181		132.11
1	1	m162	D36"	0'-1 1/2"	A181		3.56
2	2	p100	PL3/8"X5 1/2"	0'-5 7/8"	350W		6.06
7	7	p101	FB3/8"X8"	0'-7 1/8"	300W		8.30
2	2	p114	FB3/4"X6"	0'-6 1/2"	300W		9.79
1	1	p115	PL5/8"X6 1/2"	0'-8 1/2"	300W		0.00
1	1	m150	PURCHASED ITEM	-	350W		
TOTAL WEIGHT:							4482.59

QTY	FIELD BOLTS	LENGTH
0	1" Ø A325X BOLT	3 7/8"
48	1" Ø A325X BOLT	4 3/4"
4	3/4" Ø A325X BOLT	2 1/2"
4	3/4" Ø A325X BOLT	3"
QTY	SHOP BOLTS	LENGTH



MK A100 1 REQ'D

APPROVED FOR CONSTRUCTION
28-FEB-14
ISSUED BY KENLIN DESIGN GROUP

28-FEB-14	ISSUED APPROVED FOR CONSTRUCTION	MTG			
24-FEB-14	ISSUED FOR APPROVAL	MTG	13	D-EIS-4	21-2'15'16
REV	DATE	REMARKS	BY	DIV	GRID LOC. ELEV.
085344-5906-2PR		CUT-MASTERS FABRICATION			
085344-5906-2PR-ED		TANK ASSEMBLY			
MTG	2014-02-21	2014-02-28			
PSL	2014-02-28	G40.21	SEE SPEC.	13/16e	A100